



Plasson product information to improve performance
037 - 0403

PLASSON ASSEMBLY INSTRUCTIONS

GENERAL INSTRUCTIONS FOR ALL SIZES

Before assembly – ensure that the end of the pipe to be inserted into the fittings is free of scratches and and other imperfections and that both the end of the pipe and the fitting itself are clean of sand, mud, stones, etc.

Do not over tighten nut when closing. NEVER use wrenches or spanners with handle lengths longer than 46cm – excessive torque during tightening can spread nut cone and result in pull outs.

If fittings are reused , ensure split ring is sharp and bites into pipe to avoid pull outs. Alternatively replace split ring.

Note: We strongly recommend the use PTFE tape in threaded connections.

Sizes 1/2" - 2"

RURAL FITTINGS FOR RURAL PIPE

1. Cut pipe square, deburr, & chamfer internal edge of pipe with knife. Separate components of fitting & mount them on pipe – 1st the nut followed by the split ring. Make sure the large end of the split ring faces towards the fitting.



2. Insert barbed end of tail into pipe so that flange is hard against pipe face. If necessary, use a rubber mallet or piece of timber and hammer.



3. Insert spigot end of tail into body of fitting until it passes through rubber O-ring & flanges butts against shoulder of fitting. Push split ring hard against flange.



4. Firmly hand tighten the nut onto fitting body. Use a wrench for final tightening of sizes 1 1/4" and above – no more than half a turn past hand tight. NB: With 1/2" size use 16mm metric fittings. Pipe tail adaptor is not required.



Sizes 16 – 63mm

COMPRESSION FITTINGS FOR METRIC POLYETHYLENE PIPE (OD SERIES) AS4130 OR AS1159

1. Cut pipe square, remove burrs & chamfer the end of the pipe with a file or chamfering tool. Lubricate (1) end of pipe.

2. Undo the nut up to the last thread. Do not remove nut from body. (2)



3. Twist the pipe into the fitting through the nut and split ring until it meets the 1st resistance – pushing against the captive O-ring. Push & twist the pipe past the O-ring until it stops at pipe stop inside the fitting – the final stop.



4. Firmly hand tighten nut. Use a wrench for a further half turn past hand tight for final tightening of sizes 40 and above. (2)



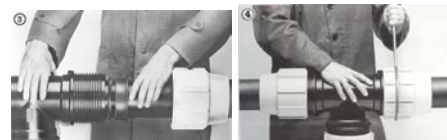
- (1) Lubrication of the pipe end is optional and will ease insertion of the pipe (use silicone lubricant)
- (2) Removing nut does not cause problems.
- (3) The full hydraulic seal is achieved when the pipe passes through the O-ring. Nut tightening is only to achieve pullout resistance – the hydraulic seal is automatically created when the pipe is pushed past the captive O-ring.

Sizes 75 – 125mm



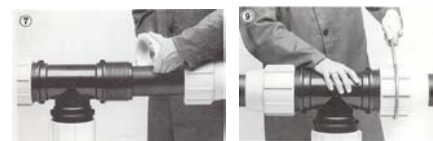
1. Draw the nut, bushing & O-ring onto the end of the pipe to a distance of about twice the pipe diameter. Fitting is made easier by lubricating pipe, O-ring & inside of fitting with silicone lubricant.

2. Insert pipe into the fitting until stopped by the step. Push O-ring & bushing forward until they reach the fitting.



3. Tighten nut with chain wrench or Plasson spanner until O-ring & bushing enter the fitting, & reach end position.

4. Unscrew nut from fitting. Open the split ring & mount on pipe with large end against bushing..



5. Tighten the nut by means of two chain wrenches with maximum handle length 40-46cms or with Plasson wrench (NB: nut should be closed firmly but nut does not need to actually meet the body)

Sizes 160mm Metric

- Undo and take out bolts and nuts
- Take the two shell halves apart
- Remove the exposed sleeve and O-ring and place over the pipe end.
- Push fitting completely home over pipe end.
- Push O-ring and sleeve into original position.
- Place the two shell halves with grip rings inserted over pipe and fitting body. Now insert bolts, washers and nuts and tighten until the shells are in contact with each other.



Poly to Copper



- Fittings supplied with copper nut. Release copper nut half a turn.
- Place a witness mark 6cms from deburred pipe end on 15(1/2") and 7cms on 20 (3/4") copper tube.
- Loosen Plasson (copper coloured) nut, insert slightly lubricated copper pipe until the witness mark on the pipe reaches the end of the nut.
- Firmly hand tighten then a further 3/4 turn using spanner or similar.
- The PTC fittings can be dismantled and reused as often as required but SS grip ring must be replaced each time.

Adaptor PTC Kits

- 15(1/2") copper fits into 20mm Plasson compression end.
- Discard black 20mm Plasson nut, discard the white split ring, slide rubber liner into fitting body, position cone and SS ring inside copper coloured nut as shown in picture. Reassemble to the Plasson body.
- Fit copper pipe as above.
- 20(3/4") copper fits into 25mm Plasson compression end.
- Assemble as above with 25mm Plasson compression end.

The unused black Plasson nuts and white split rings can be saved and used with Plasson bodies – Plasson Cat. No. 7011, Vinidex Code 84005 (20mm) and 84006 (25mm).

Note:

Adaptor Kits fit into Plasson Reducing Sets (Cat. 7930).



SYDNEY
131a Victoria Rd
Bellevue Hill NSW 2023
Australia
tel: 61 2 9326 2433
fax: 61 2 9362 3507
email: dkirton@plasson.com.au

VICTORIA
PO Box 2166
Moorabbin LPO 3189
Australia
tel: 61 3 9591 0099
fax: 61 3 9591 0090
email: nmckay@plasson.com.au

QUEENSLAND
70 Brentwood Avenue
Mooloolaba QLD 4557
Australia
tel: 61 7 5477 5088
fax: 61 7 5477 5099
email: mtibbits@plasson.com.au

PERTH
31 Atoll Court
Mullaloo WA 6027
Australia
tel: 61 8 9337 4344
fax: 61 8 9337 4963
email: lkarapetcoff@plasson.com.au

